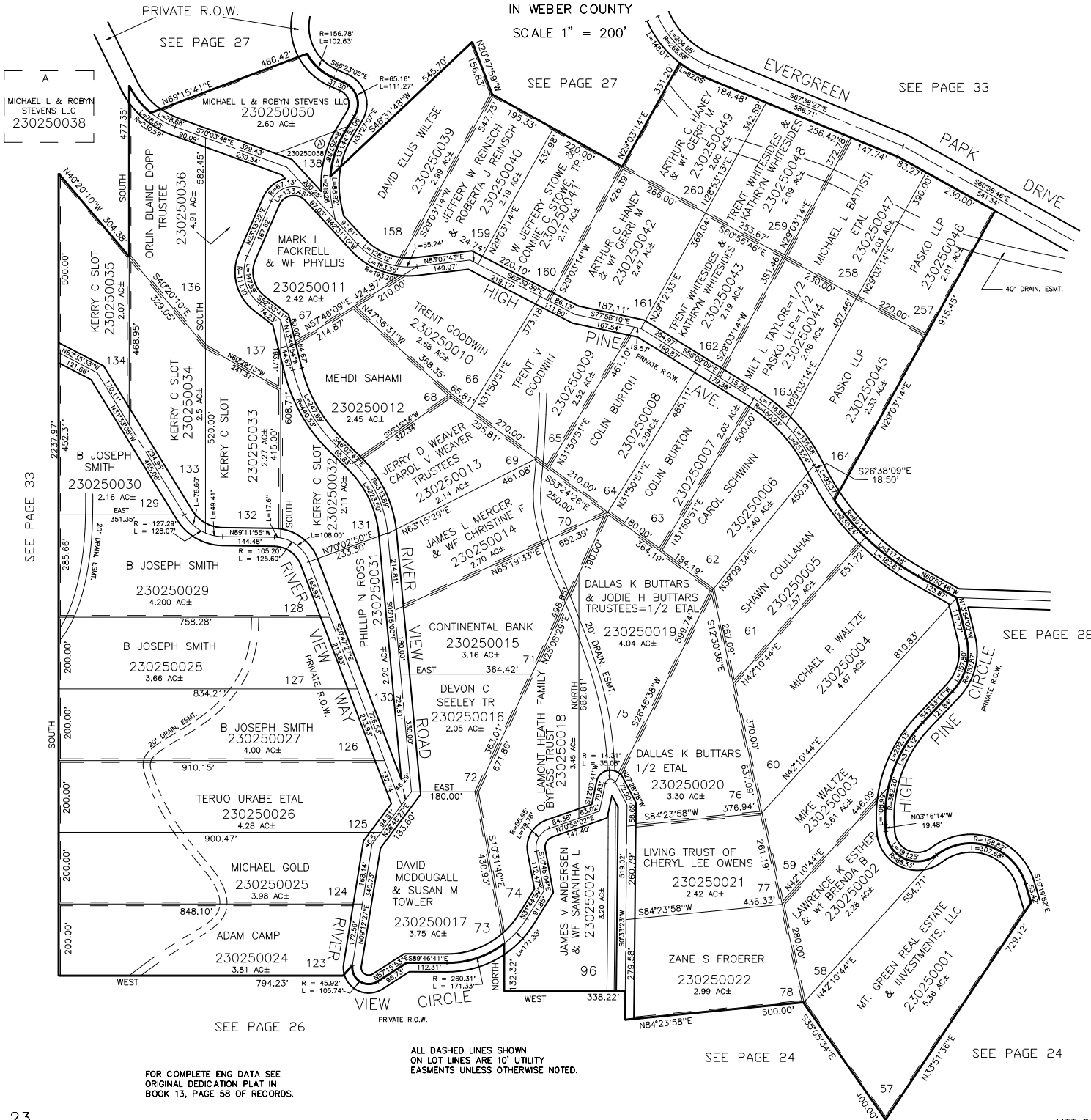


PART OF SEC. 31-32, T.7N., R.3E., S.L.B. & M.  
EVERGREEN PARK SUBDIVISION NO. 1

TAXING UNIT: 58

IN WEBER COUNTY  
SCALE 1" = 200'



FOR COMPLETE ENG DATA SEE ORIGINAL DEDICATION PLAT IN BOOK 13, PAGE 58 OF RECORDS.

ALL DASHED LINES SHOWN ON LOT LINES ARE 10' UTILITY EASEMENTS UNLESS OTHERWISE NOTED.